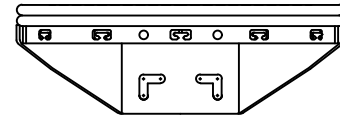
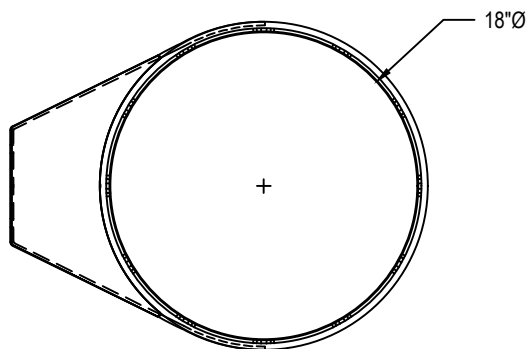


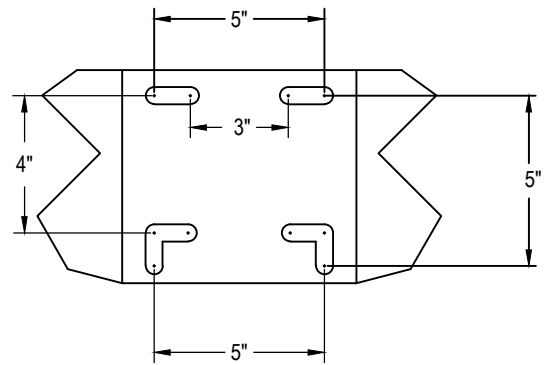
SIDE



FRONT



TOP



REAR

Rim shall consist of two 5/8" diameter AISI 1018 cold drawn carbon steel rings welded together at a minimum of six places. Back and side plates shall be 3/16" thick and be continuously welded. The net attachment system shall be of a continuous type constructed of 3/16" x 1" steel with punched net attachment slots suitable for nylon (included) or chain (optional) nets. Individual or continuous wire formed netlocks are not an acceptable equal. Rim shall be punched to mount on any front mount backboard, have an unconditional lifetime warranty and orange powder coated finish. Mounting hardware shall be included. Installation to be completed in accordance with manufacturer's instructions. Do not scale drawings. Rim shall be made in the USA and weigh approximately 27#.



PRODUCT SPECIFICATION

BA39U ULTIMATE™ FRONT MOUNT PLAYGROUND GOAL

REVISED 8/1/17